

Appendix 3. Ravenhall Grassland Offset Management Actions Report (AES 2020)



Ravenhall Grassland Offset - Final Report

Report for Dexux / Ecology & Heritage Partners

PREPARED BY:

Stephanie Grylls, Aus Eco Solutions

11 Smallmans Rd, Ballan, 3342

| stephanie@ausecosolutions.com.au

www.ausecosolutions.com.au

Ravenhall Offset Final Report 2020

INTRODUCTION

Control works objectives:

1. Weed control - noxious Nassella species and herbaceous weeds
2. Woody weed control
3. Pest animal control
4. Biomass reduction (Ecological burn of ~7ha)
5. Remove rubbish from site
6. Spiny Rice Flower management
7. Challenges

All management activities were guided by the Conservation Management Plan: Ravenhall Industrial Precinct 2019 (Ecology and Heritage Partners).

Ravenhall Offset Mapping

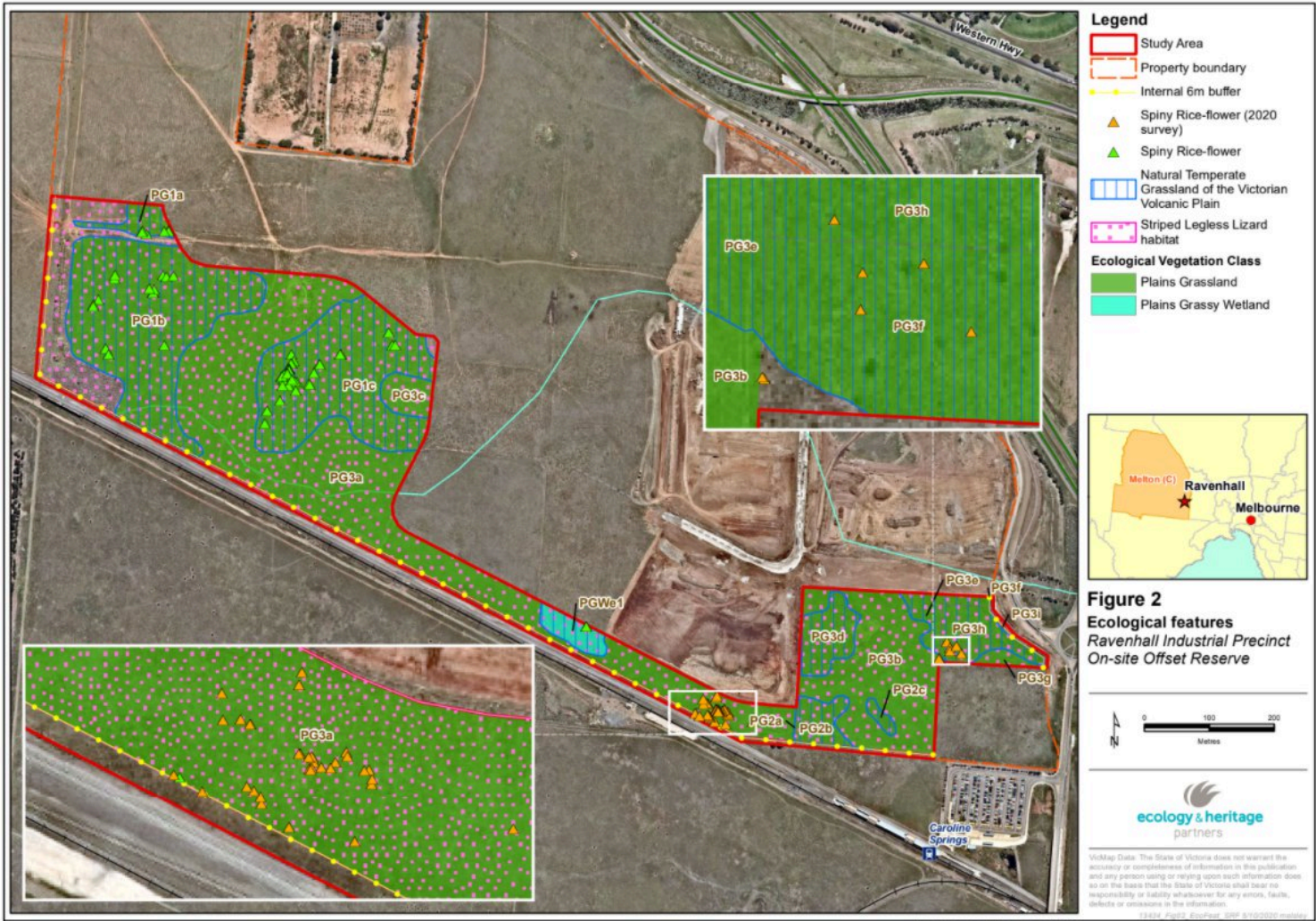


Image 1: Ravenhall Offset site

1. Weed Control - Noxious Grasses & Herbaceous Weeds

1.1. Site Observations

- The removal of the horses from site has allowed the vegetation to begin growing and establishing themselves much better. Letting the natives seed over Spring will be very beneficial to the site.
- Paterson's Curse covers alot of the offset and will take time to eradicate completely from site
- There are some very large patches of Chilean Needle Grass, some of these larger patches have been sprayed around the border to prevent spread.

1.2 Works Completed

- Serrated Tussock and Chilean Needle Grass have both been controlled onsite (Yellow polygon) using an active chemical (Glyphosate) and a residual chemical (Flupropanate). Using these two chemicals together assists with killing the adult plant quickly, as well as staying in the soil to prevent these Nassella seeds to grow and develop.
- Artichoke Thistle, Cape Weed and Patersons Curse have also been treated in patches within these areas, and also in selective patches within the remainder of the offset site.

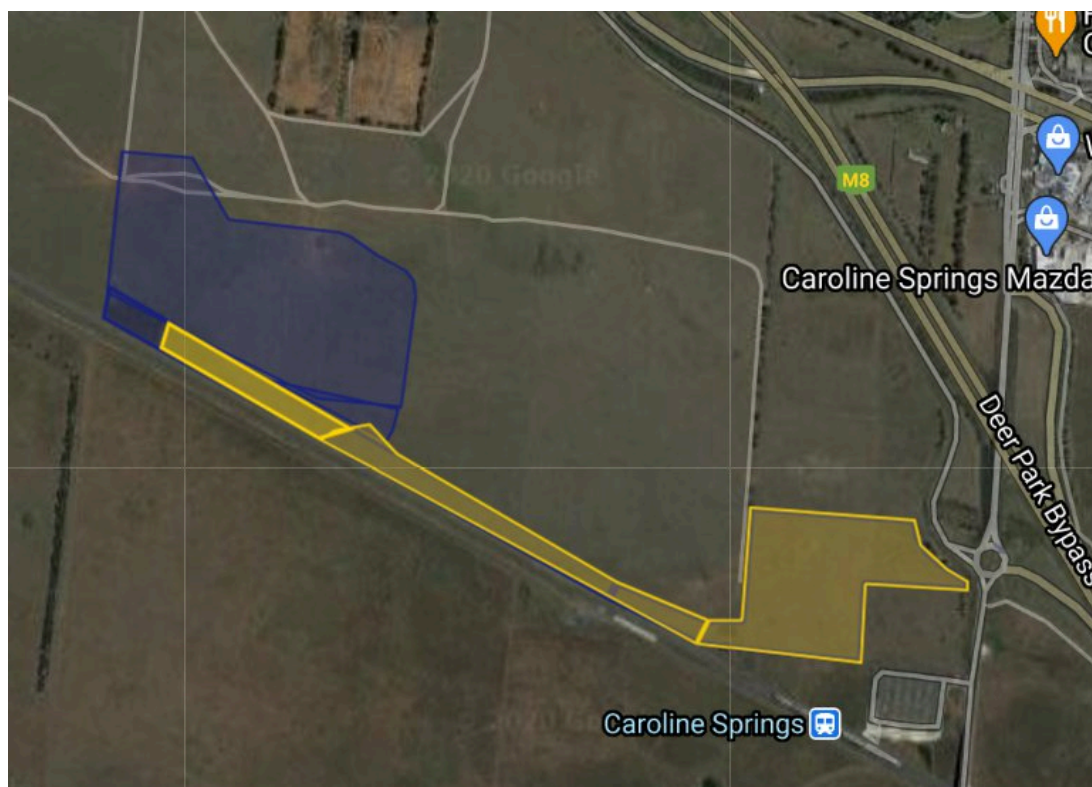


Image 2: Offset site (blue). Current control of target weeds (yellow) (October 2020)



Image 3-6: Examples of weed control onsite



Image 7: Examples of weed control onsite

2. Woody Weed Control

2.1. Site Observations

- Boxthorn and Sweet Briar only remains in minimal numbers along fence lines and areas outside of offset site boundaries

2.2 Works Completed

- Boxthorn and Sweet Briar control works began at the beginning of the control period. This involved cutting and painting all woody weeds onsite with chainsaws, loppers and neat chemical. Some of these have been piled for burning to remove from site and remove harbour for any rabbits.
- Works are completed.

3. Pest Animal Control

3.1. Site Observations

- The large rocks harbour the majority of rabbits within the offset.

3.2 Works Completed

- Fumigation and warren collapsing has been conducted in the soil piles where possible (see attached pictures)
- Another fumigation was conducted in Spring.



Image 8 & 9: Examples rabbit warrens / activity

4. Biomass Reduction (Ecological Burn)

4.1. Site Observations

- The Autumn ecological burn could not go ahead with the small window of opportunity available and weather conditions that were not in our favor. The burn was postponed until spring, and with the extension of COVID-19 restrictions it was decided to postpone all burning activities onsite.

4.2 Works Completed

- The burn plan has been created (V1.0 - V3.0) V1.0 was for Autumn, V3.0 is for Spring.
- All fire preparation was completed.
- Burn has been postponed until Autumn 2021 due to COVID-19 restrictions.



Image 10 & 11: Examples firebreak installation for Spring Burn

5. Rubbish Removal

Before:



After:



Image 12 & 13: Examples of rubbish removal

6. Spiny Rice Flower Management

6.1 Site observations

- Spiny Rice Flowers have been located by our team as weed control commenced. The site is home to over 100+ Spiny Rice Flowers, with more and more being found every day. The plants have been staked / flagged accordingly to assist with weed control onsite and to avoid these areas when driving.
- Spiny Rice Flowers have also been recorded outside of the offset site (pictured below) x3 have been found very close to the offset, with potentially many more.

6.2 Works completed

- This work is completed outside of the project scope, but in interest on the conservation value of the property by Aus Eco Solutions and its employees.



Image 14 & 15: Spiny Rice Flowers found inside and outside offset site

7. Challenges

Consistent challenges that the Ravenhall Offset faces include:

- Invasive weed seed from neighboring land (Vline), which spread into the reserve.
- Noxious weed invasion from neighbouring properties
- The large rocks harbour the majority of rabbits within the offset.